



CHERIE
BERGER
TEAM

July 2022

Green Brook Market Insights

GREEN BROOK
MARKET INSIGHTS

Market Profile & Trends Overview

The table belows shows data & statistics for July 2022 (CM), and the percentage difference of these metrics compared to data from last month (LM), the last three months (L3M), the same month last year (PYM), the entire last year (LY), prior year (PY), year-to-date (YTD), and the prior year-to-date (PYTD).

		CM	LM	L3M	PYM	LY	PY	YTD	PYTD
Inventory	# OF PROPERTIES	30	76%	125%	50%	74%	10%	-	-
	MEDIAN PRICE	\$674,950	8%	0%	17%	14%	29%	-	-
	AVERAGE PRICE	\$718,540	-1%	-2%	2%	4%	16%	-	-
	PRICE PER SQFT	\$271	-3%	1%	10%	8%	13%	-	-
	MONTHS OF SUPPLY	10.0	488%	590%	400%	-72%	182%	-	-
New Listings	# OF PROPERTIES	24	100%	112%	100%	117%	81%	86	2.4%
	MEDIAN PRICE	\$589,950	1%	-8%	28%	17%	31%	\$599,450	26.3%
	AVERAGE PRICE	\$656,758	-2%	-2%	20%	8%	20%	\$703,222	25.9%
	PRICE PER SQFT	\$266	-5%	55%	4%	15%	41%	\$272	19.3%
Sales	# OF PROPERTIES	3	-70%	-68%	-70%	-69%	-66%	49	8.9%
	MEDIAN PRICE	\$900,000	75%	38%	90%	71%	105%	\$500,000	20.5%
	AVERAGE PRICE	\$743,333	20%	-1%	16%	27%	55%	\$688,786	56.5%
	PRICE PER SQFT	\$229	-19%	-21%	-20%	-7%	14%	\$256	38.4%
	SALE-TO-LIST RATIO	97.2%	-7.0%	-6%	-4.9%	-2.8%	0.6%	101.1%	6.4%

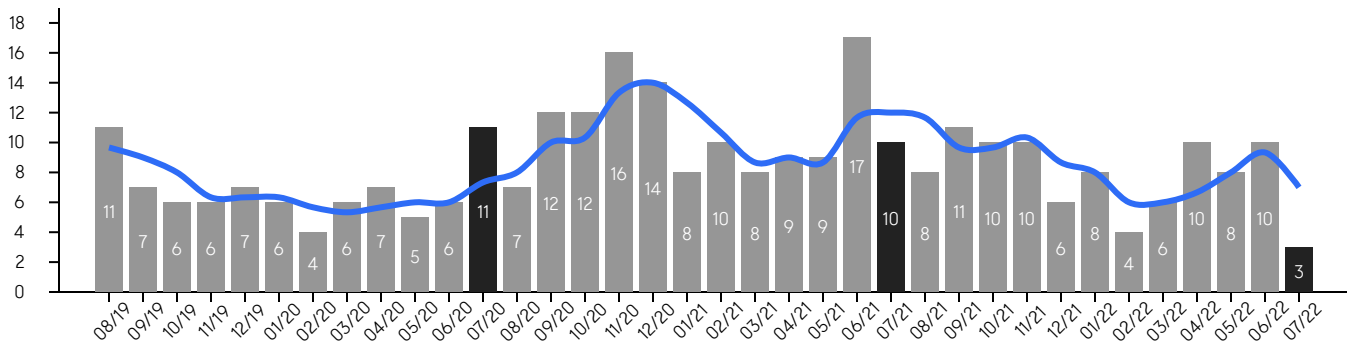
Green Brook

JULY 2022

Property Sales

There were 3 sales in July 2022, a change of -70% from 10 in July 2021 and -70% from the 10 sales last month. Compared to July 2020 and 2021, sales were at their lowest level. There have been 49 year-to-date (YTD) sales, which is 8.9% higher than last year's year-to-date sales of 45.

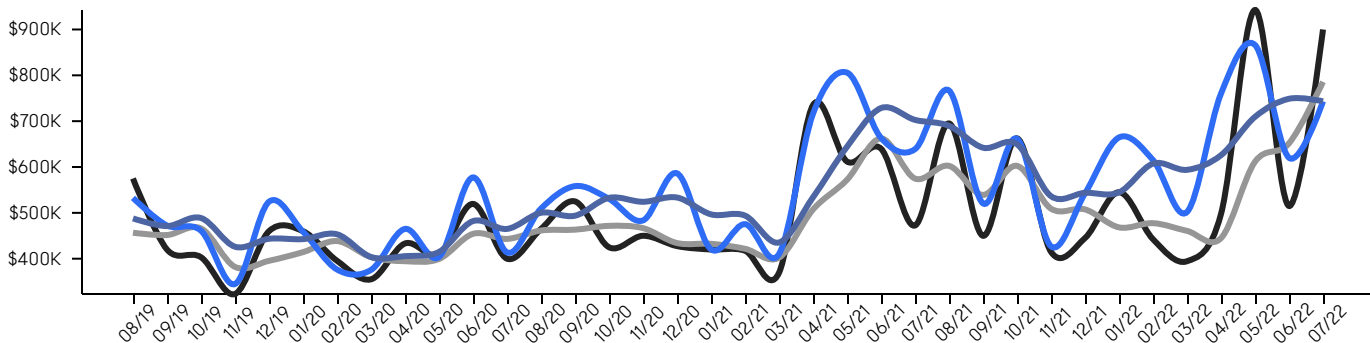
■ 3-Month Average



Property Prices

The median sales price in July 2022 was \$900,000, a change of 90% from \$472,500 in July 2021, and a change of 75% from \$515,000 last month. The average sales price in July 2022 was \$743,333, a change of 16% from in July 2021, and a change of 20% from last month, and was at its highest level compared to 2021 and 2020.

■ Median ■ Median (3-Month) ■ Average ■ Average (3-Month)



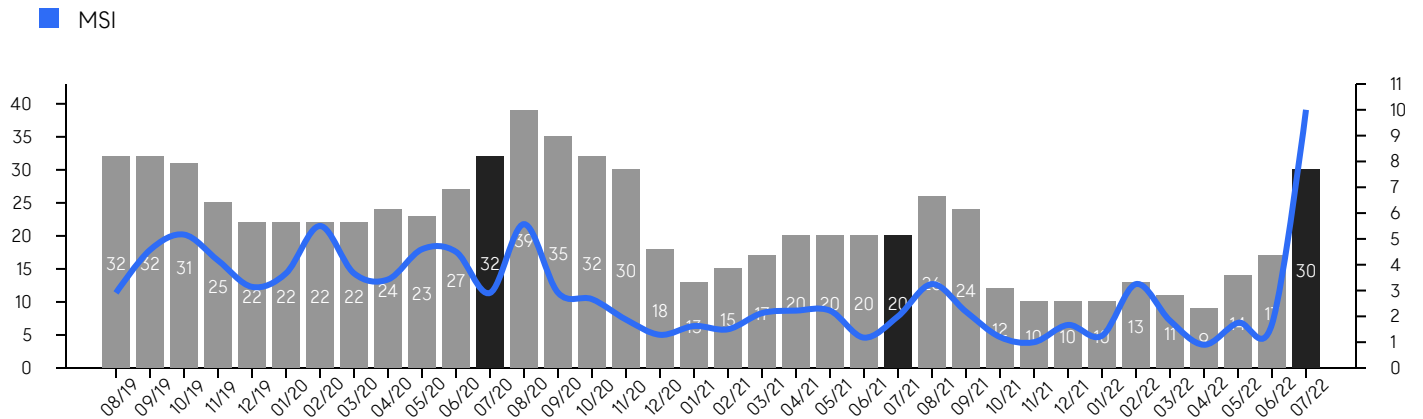
© 2022. Based on information from Garden State MLS, LLC for the period of January 2018 through July 2022. Due to MLS reporting methods and allowable reporting policy, this data is only informational and may not be completely accurate. Data maintained by the MLS may not reflect all real estate activity in the market.

Green Brook

JULY 2022

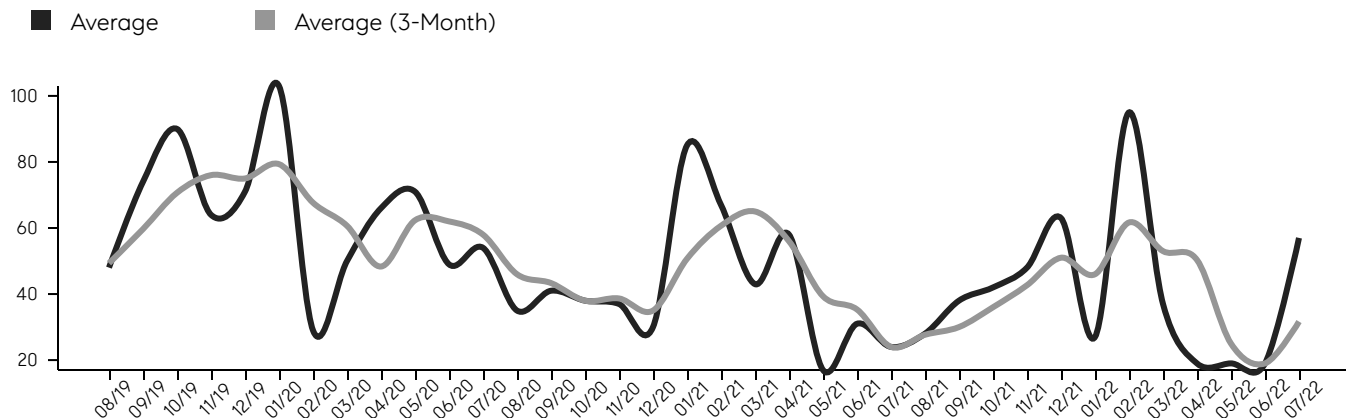
Inventory & MSI

The total inventory of properties available for sale as of July 2022 was 30, a difference of 76% from last month, and 50% from 20 in July 2021, and was at mid level compared to 2021 and 2020. The months of supply inventory (MSI) was at 10.0 months, a similar level compared to 2021 and 2020. A comparatively lower MSI benefits sellers, while a higher MSI benefits buyers.



Market Time

The average days on market (DOM) shows the number of days the average property is on the market before selling. An upward trend tends to indicate a move towards a buyer's market, while a downward trend tends to indicate a move to a seller's market. The DOM for July 2022 was 57, a change of 200% from 19 days last month, and 138% from 24 days in July 2021, and was at its lowest level compared to 2021 and 2020.



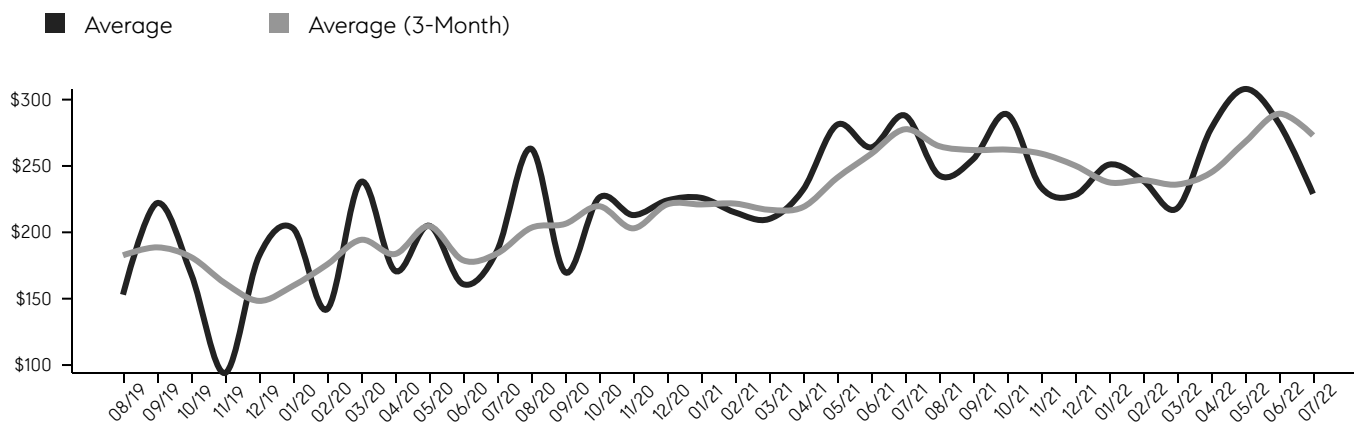
© 2022. Based on information from Garden State MLS, LLC for the period of January 2018 through July 2022. Due to MLS reporting methods and allowable reporting policy, this data is only informational and may not be completely accurate. Data maintained by the MLS may not reflect all real estate activity in the market.

Green Brook

JULY 2022

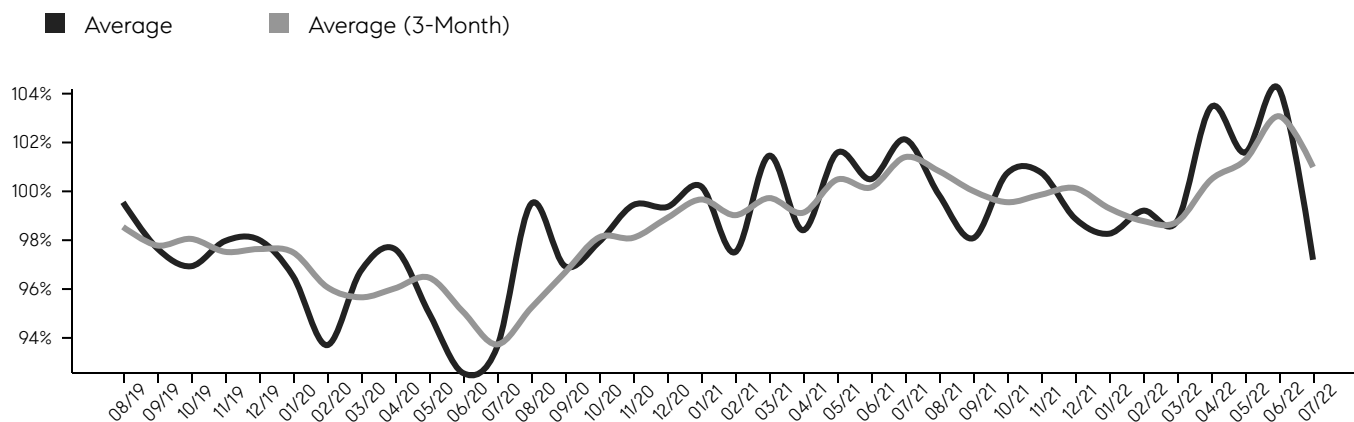
Selling Price Per Square Foot

The selling price per square foot (PPSF) is a great indicator for the direction of property values. Since median & average sales prices can be impacted by the "mix" of high or low end properties in the market, the selling price per square foot is a more normalized indicator on the direction of property values.



Selling Price vs. Listing Price

The selling price vs. listing price reveals the average amount that sellers are agreeing to come down from their list price. The lower the ratio is below 100%, the more of a buyer's market exists, while a ratio at or above 100% indicates more of a seller's market. The July 2022 selling price vs. listing price ratio was 97.2%, compared to 104.2% last month, and 102.1% in July 2021.



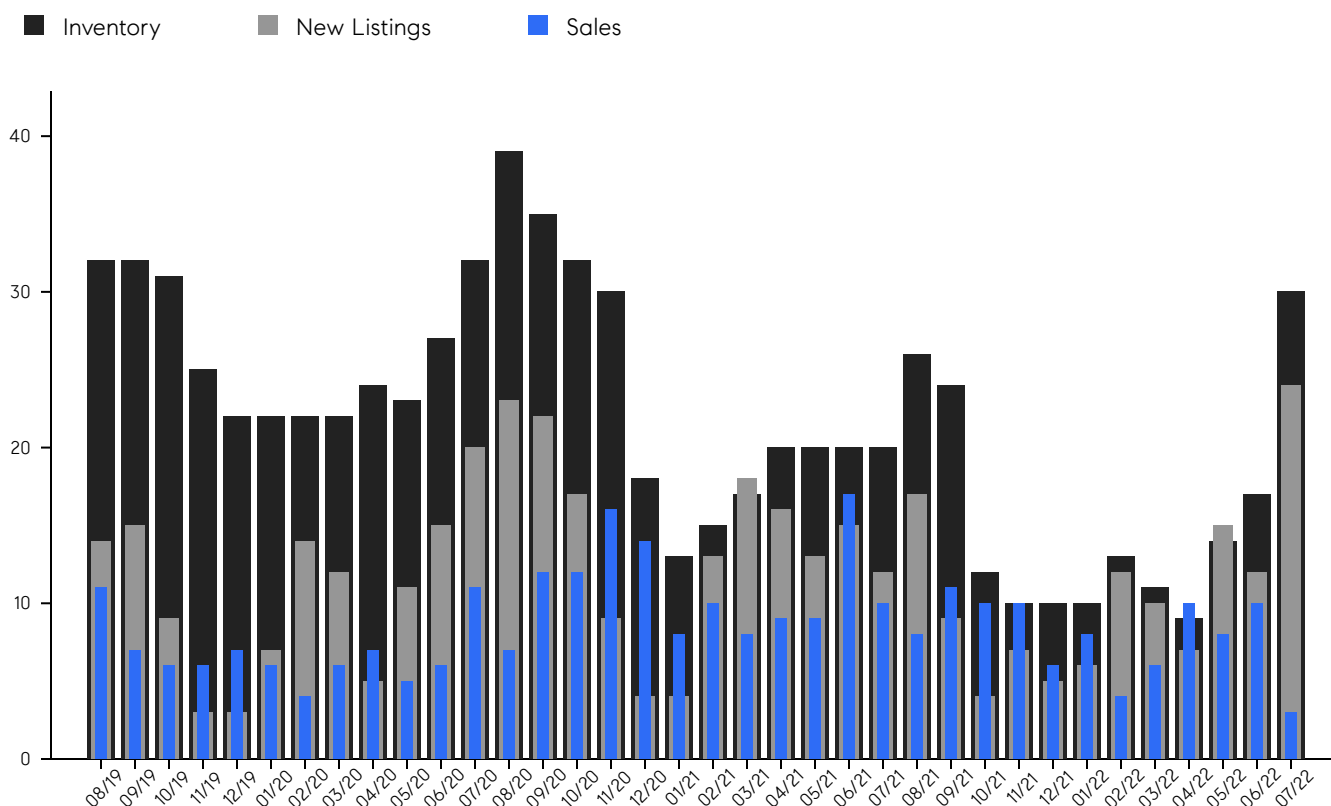
© 2022. Based on information from Garden State MLS, LLC for the period of January 2018 through July 2022. Due to MLS reporting methods and allowable reporting policy, this data is only informational and may not be completely accurate. Data maintained by the MLS may not reflect all real estate activity in the market.

Green Brook

JULY 2022

Inventory, New Listings & Sales

This last view of the market combines monthly inventory of properties for sale along with new listings and sales. The graph shows the basic annual seasonality of the market, as well as the relationship between these items. The number of new listings in July 2022 was 24, a change of 100% from 12 last month and 100% from 12 in July 2021.



© 2022. Based on information from Garden State MLS, LLC for the period of January 2018 through July 2022. Due to MLS reporting methods and allowable reporting policy, this data is only informational and may not be completely accurate. Data maintained by the MLS may not reflect all real estate activity in the market.

Green Brook

JULY 2022

MONTH	# OF SALES	3-MO AVG	MEDIAN SALE PRICE	3-MO AVG	AVERAGE SALE PRICE	3-MO AVG	DAYS ON MARKET	3-MO AVG	AVERAGE PPSF	3-MO AVG	SALE /LIST	3-MO AVG	INV	NEW LISTINGS	MSI
Jul '22	3	7	\$900K	\$786K	\$743K	\$743K	57	32	\$229	\$273	97.2%	101.0%	30	24	10.0
Jun '22	10	9	\$515K	\$652K	\$620K	\$749K	19	19	\$282	\$289	104.2%	103.1%	17	12	1.7
May '22	8	8	\$942K	\$612K	\$866K	\$709K	19	25	\$308	\$268	101.6%	101.3%	14	15	1.8
Apr '22	10	7	\$497K	\$445K	\$760K	\$626K	19	50	\$278	\$245	103.4%	100.5%	9	7	0.9
Mar '22	6	6	\$394K	\$461K	\$501K	\$594K	37	53	\$218	\$236	98.8%	98.7%	11	10	1.8
Feb '22	4	6	\$442K	\$478K	\$615K	\$607K	95	62	\$239	\$239	99.2%	98.8%	13	12	3.3
Jan '22	8	8	\$545K	\$468K	\$664K	\$545K	27	46	\$251	\$238	98.3%	99.3%	10	6	1.3
Dec '21	6	9	\$445K	\$508K	\$542K	\$544K	63	51	\$228	\$250	98.9%	100.1%	10	5	1.7
Nov '21	10	10	\$415K	\$509K	\$427K	\$536K	48	43	\$234	\$259	100.8%	99.9%	10	7	1.0
Oct '21	10	10	\$662K	\$603K	\$661K	\$650K	42	36	\$289	\$262	100.7%	99.6%	12	4	1.2
Sep '21	11	10	\$450K	\$539K	\$520K	\$642K	38	30	\$255	\$262	98.1%	100.0%	24	9	2.2
Aug '21	8	12	\$695K	\$603K	\$766K	\$690K	28	28	\$243	\$265	99.9%	100.8%	26	17	3.3
Jul '21	10	12	\$472K	\$575K	\$638K	\$703K	24	24	\$288	\$278	102.1%	101.4%	20	12	2.0
Jun '21	17	12	\$640K	\$662K	\$663K	\$729K	31	35	\$264	\$259	100.5%	100.2%	20	15	1.2
May '21	9	9	\$612K	\$572K	\$805K	\$644K	17	39	\$281	\$241	101.6%	100.5%	20	13	2.2
Apr '21	9	9	\$735K	\$507K	\$716K	\$534K	58	56	\$232	\$219	98.4%	99.1%	20	16	2.2
Mar '21	8	9	\$369K	\$402K	\$410K	\$435K	43	65	\$210	\$217	101.5%	99.7%	17	18	2.1
Feb '21	10	11	\$417K	\$422K	\$475K	\$494K	67	61	\$215	\$222	97.5%	99.0%	15	13	1.5
Jan '21	8	13	\$420K	\$433K	\$420K	\$497K	85	51	\$226	\$221	100.2%	99.7%	13	4	1.6
Dec '20	14	14	\$427K	\$434K	\$586K	\$533K	30	35	\$224	\$221	99.4%	98.9%	18	4	1.3
Nov '20	16	13	\$450K	\$467K	\$483K	\$524K	37	39	\$213	\$203	99.4%	98.1%	30	9	1.9
Oct '20	12	10	\$425K	\$472K	\$530K	\$533K	38	38	\$226	\$220	97.9%	98.1%	32	17	2.7
Sep '20	12	10	\$524K	\$463K	\$558K	\$494K	41	43	\$170	\$206	96.9%	96.7%	35	22	2.9
Aug '20	7	8	\$465K	\$462K	\$509K	\$500K	35	46	\$263	\$203	99.5%	95.2%	39	23	5.6
Jul '20	11	7	\$400K	\$443K	\$413K	\$465K	54	58	\$186	\$184	93.6%	93.7%	32	20	2.9
Jun '20	6	6	\$519K	\$454K	\$577K	\$482K	49	62	\$161	\$179	92.6%	95.1%	27	15	4.5
May '20	5	6	\$410K	\$399K	\$403K	\$415K	71	62	\$205	\$205	95.0%	96.5%	23	11	4.6
Apr '20	7	6	\$433K	\$395K	\$464K	\$406K	66	48	\$171	\$184	97.6%	96.0%	24	5	3.4
Mar '20	6	5	\$355K	\$403K	\$375K	\$404K	50	61	\$238	\$194	96.8%	95.7%	22	12	3.7
Feb '20	4	6	\$395K	\$438K	\$376K	\$453K	29	68	\$142	\$176	93.7%	96.1%	22	14	5.5
Jan '20	6	6	\$460K	\$414K	\$459K	\$443K	103	79	\$203	\$160	96.5%	97.5%	22	7	3.7
Dec '19	7	6	\$460K	\$395K	\$524K	\$443K	71	75	\$182	\$148	98.0%	97.6%	22	3	3.1
Nov '19	6	6	\$323K	\$382K	\$344K	\$426K	64	76	\$94	\$162	98.0%	97.5%	25	3	4.2
Oct '19	6	8	\$403K	\$466K	\$461K	\$489K	90	71	\$169	\$181	96.9%	98.1%	31	9	5.2
Sep '19	7	9	\$420K	\$452K	\$472K	\$471K	74	60	\$222	\$189	97.7%	97.8%	32	15	4.6
Aug '19	11	10	\$575K	\$457K	\$532K	\$488K	48	49	\$153	\$183	99.6%	98.5%	32	14	2.9

© 2022. Based on information from Garden State MLS, LLC for the period of January 2018 through July 2022. Due to MLS reporting methods and allowable reporting policy, this data is only informational and may not be completely accurate. Data maintained by the MLS may not reflect all real estate activity in the market.



CHERIE
BERGER
TEAM



Cherie Berger

cherie.berger@compass.com

M: 908.410.0931



Steven Berger

steven.berger@compass.com

M: 908.256.0307



Ashley Berger-Freitas

ashley.freitas@compass.com

M: 908.432.9818

Compass makes no representations or warranties, express or implied, with respect to future market conditions or prices of residential product at the time the subject property or any competitive property is complete and ready for occupancy or with respect to any report, study, finding, recommendation or other information provided by Compass herein. Moreover, no warranty, express or implied, is made or should be assumed regarding the accuracy, adequacy, completeness, legality, reliability, merchantability or fitness for a particular purpose of any information, in part or whole, contained herein. All material is presented with the understanding that Compass shall not be deemed to provide legal, accounting or other professional services. This is not intended to solicit the purchase or sale of any property. Any and all such warranties are hereby expressly disclaimed. Equal Housing Opportunity.

© Compass. All Rights Reserved. This information may not be copied, used or distributed without Compass' consent.